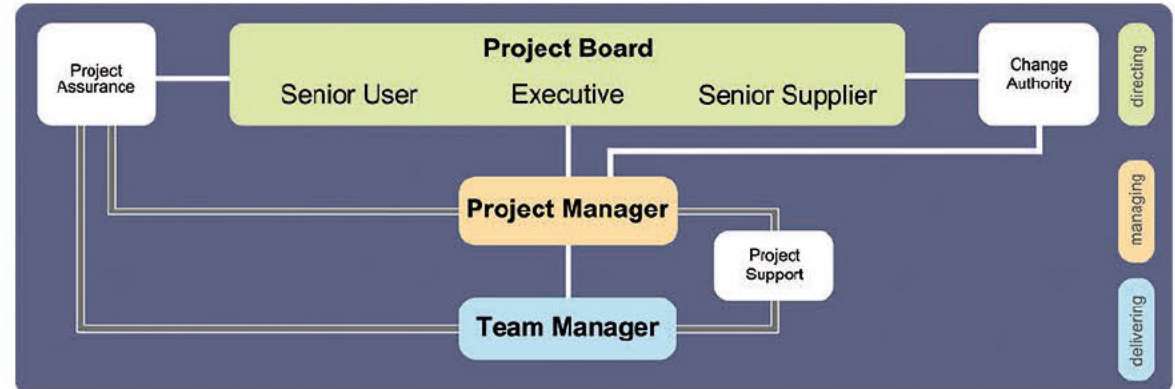
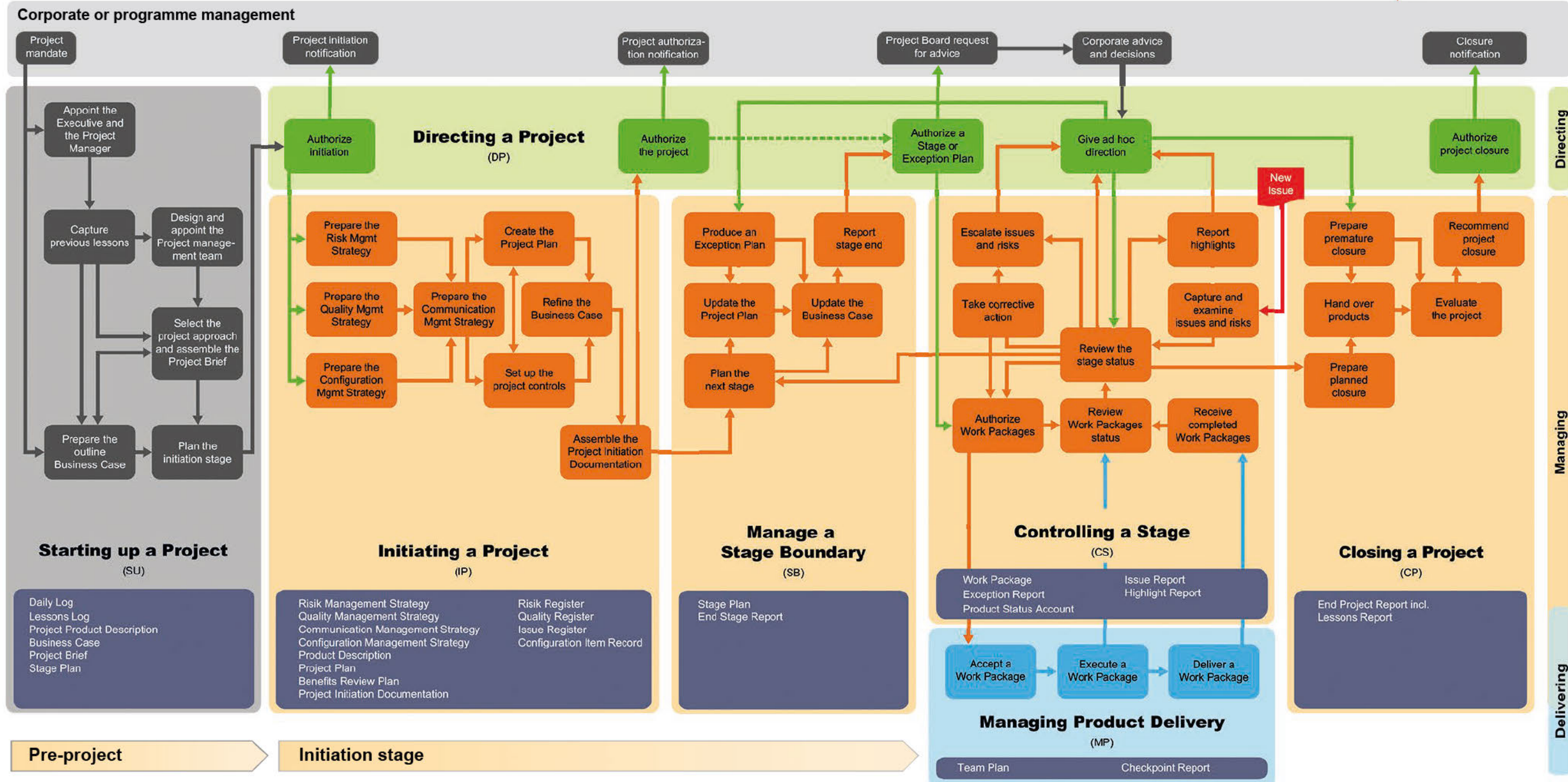


# PRINCE2® The big and the small picture



**PRINCE2 Principles**

- Continued business justification
- Defined roles and responsibilities
- Focus on products
- Learn from experience
- Manage by exception
- Manage by stages
- Tailor to suit the project environment

**PRINCE2 Processes**

- Starting up a Project (SU)
- Directing a Project (DP)
- Initiating a Project (IP)
- Controlling a Stage (CS)
- Managing Product Delivery (MP)
- Managing a Stage Boundary (SB)
- Closing a Project (CP)

**PRINCE2 Themes**

- Business Case
- Organization
- Quality
- Plans
- Risk
- Change
- Progress

**PRINCE2 Tailoring**

- Tailor to suite the project environment